



THE LEAGUE OF WOMEN VOTERS OF SAN DIEGO INVITES YOU AND YOUR GUESTS TO THE
ANNUAL HOLIDAY PARTY AND SILENT AUCTION

WEDNESDAY, DECEMBER 8, 2010 5:00-9:00 P.M.

Come enjoy friends, the potluck dinner*, the Monettes Choral Group, the silent auction, and Suzy Morgan's Tarot card readings (donation \$5-\$10 to benefit LWVSD), so popular last year.

Roetter Hall
GOOD SAMARITAN EPISCOPAL CHURCH
4321 Eastgate Mall, San Diego, CA 92122

*Potluck dinner will be served at 6:00 P.M. Please bring one dish per family:

If your last name begins with A-I, please bring an appetizer; J-Q, salad or vegetable; R-Z, dessert.

Menu includes appetizers, baked turkey and ham, potatoes, gravy, salads, and desserts

Make checks payable to LWVSD and mail to 4901 Morena Boulevard, Suite 104 San Diego, CA 92117

Phone: (858) 483-8696 More information: Jeanne Brown at (619) 857-1807

DIRECTIONS

From the North: Use I-5 south, exit at Genesee Ave.; turn **L** onto Genesee Ave. Proceed to Eastgate Mall. Turn **L**.

From the South on 5: Take I-5 north, exit at La Jolla Village Drive; turn **R** (east) onto La Jolla Village Drive. Turn **L** onto Genesee Ave. Proceed to Eastgate Mall and turn **R**.

From the South on 805: Take 805 north, exit at La Jolla Village Drive; turn **L** (west) onto La Jolla Village Drive. Turn **R** onto Genesee Avenue. Proceed to Eastgate Mall and turn **R**.

Parking: There is plenty of parking, including handicapped parking spaces. Leaguers will direct and assist you. People and food items may be dropped off in front of the party location.

Holiday Party on Dec. 8, 2010

PLEASE RESPOND BY 12/06/2010

Name(s) _____

Address _____

Phone _____ E-mail _____ Enclosed (\$20 per person) _____

*POTLUCK DISH I WILL BRING _____

I am sorry that I am unable to attend but wish to support the LWVSD with a donation of \$ _____

**League of Women Voters
July 2010 - June 2011
Board of Directors**

Co-President and Int'l Relations Co-Chair Anne Hoiberg
 Co-President and Public Policy Chair Susan Baer, Ph.D.
 First Vice-President Jeanne Brown
 Treasurer Delores Chavez-Harmes
 Secretary Nancy Witt
 VP/Administration Ruberta Castro
 VP/Membership Beryl Flom
 VP/Program Jeanne Brown
 Faye Rose
 VP/Education Penny Adler
 Voter Service` Mary Jean Word
 Voter Editor Dolores Nelson
 Unit Coordinator Jody Tadder
 Administrative Assistant

Genoveva Martinez

Flexible hours (call ahead, please)

Phone/FAX: (858) 483-8696

Email: lwvsd@san.rr.com

Website: www.lwvsandiego.org

SmartVoter: www.smartvoter.org

December 2010 Volume 75, No. 6
San Diego Voter is generally published monthly as desired by the Board.

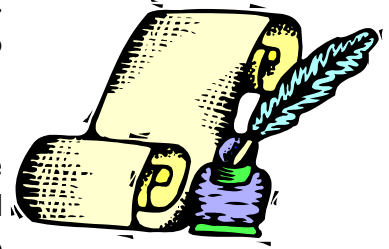
Subscription: \$27 per year

League of Women Voters of San Diego
 4901 Morena Blvd.,
 Building 100, Suite 104,
 San Diego, CA 92117

**Co-President's Report:
Outcome of Our Regional Training Workshop**

With the November election behind us, is it time for Leaguers to relax? No way, it's time to get back to work! A number of us gathered together on Saturday, November 6, to participate in the Regional Training Workshop hosted by our League. This very useful workshop is open to all League members as well as the public, so please try to participate and encourage others to participate in future workshops. You will learn a great deal.

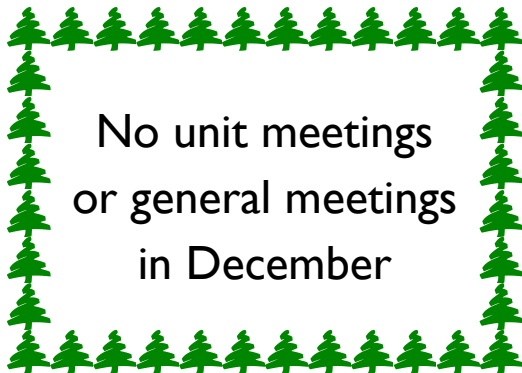
I welcomed attendees at the start of the workshop and introduced Bonnie Hamlin, League of Women Voters of California (LWVC) Member Services Director, who thanked our League for hosting the workshop. The four main workshop topics included Redistricting, Fundraising in Slow Economic Times, Advocacy – When, Where, & How Does League Do It?, and Being Visible in the Community/Using Social Media. LWVC Board members served as workshop presenters.



During the first presentation, Redistricting, the very knowledgeable Chris Carson encouraged League members to become an Observer to follow the redistricting process at the state and/or local levels. As Observers, Leaguers serve as on-the-ground reporters who take a ring side seat and keep the redistricting process transparent. Each Observer would only need to attend one or two meetings and report on how and where the Redistricting Commission conducts its business and how the Commission interacts with the public. If you are interested in becoming an Observer for the state redistricting process, please e-mail: redistricting@lwvc.org for further information. If you are interested in observing our local redistricting process, please contact me at: sbaer@san.rr.com or (858) 569-5183. Please seriously consider taking part in this very important and fascinating process.

During the second presentation, Fundraising in Slow Economic Times, Jenny Waggoner provided a wealth of information. She provided data about the success rates of individual asks for donations: Face-to-face 50%, Phone Call 25%, Letter 15%, Phone 10%, and Direct Mail 3%. She also described how some local Leagues offer different membership categories in addition to the standard one as part of their fundraising efforts. For example, in addition to its standard membership category, one League offers a Suffragist membership for \$100 and a Founder's Circle membership for \$500. Speaking of fundraising, we hope you have given or will consider giving a much-needed end of year donation of any size to our League.

(continued next page)



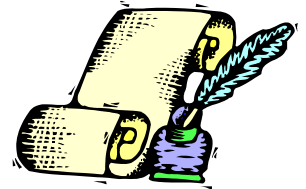
No unit meetings
or general meetings
in December

Co-President's Report: Outcome of Our Regional Training Workshop

(continued from previous page)

In the Advocacy workshop, Helen Hutchison very aptly described how the League takes action on issues. Our local League may take action based on League of Women Voters Principles, LWVUS positions, LWVC positions and action policies, and local and ILO positions. She also gave us a list of important resources that we can all access including the LWVUS Impact on Issues, LWVC Action Policies and Positions, and the LWVC How to...Take Action.

She also reminded us about the double meaning of "the League speaks with one voice." This statement means that the League President or Co-Presidents speak for the League, and that both national and state positions apply to local Leagues.



Jenny Waggoner served as presenter of the final workshop, Being Visible in the Community/Using Social Media. As her key points, Jenny told us that: 1) Everyone should embrace the goal of our League being visible; 2) We should set priorities for our audience; 3) Our brand and messaging should be consistent; 4) We should use the League's public and members-only websites; 4) We should explore Flickr, Facebook, YouTube, and Twitter as possible useful tools; and 5) We should target partners for our League and think creatively.

We thank everyone who helped to organize this interesting and informative workshop, especially Jeanne Brown and Faye Rose and their program committee.

Happy holidays to all, and I hope to see many of you at our December 8th holiday party.

— Susan Baer, Ph.D., Co-President

Save the Date — Program Planning



Please mark your calendar for our Program Planning meeting that will be at 10:00 a.m. on Saturday, January 22, 2011 at the Linda Vista Library, 2160 Ulric Street, San Diego 92111.

What is program planning? It is the time of year when local Leagues communicate to the state or national LWV what issues are the most important to them and where we believe the resources should be allocated. The League always tries to be a "bottom-up" rather than a "top-down" organization. In order to do that, the national League has to hear from us. In the spring, these issues will be reviewed by the LWVC Board of Directors. At the state convention in May (this year in Ventura), the delegates will discuss and vote on the issues for emphasis along with possible studies.



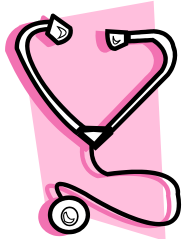
If you have a copy of the State Positions, you may want to get inspiration from it. Think of issues that you feel we should concentrate on and then either attend the meeting on January 22, share your ideas at your local unit meeting in January, or contact our office at (858) 483-8696 or Jeanne Brown at jhisten@cox.net. Let's hear from you.

— Jeanne Brown, V/P Program

RECENT CHANGES IN HEALTH CARE

Some of the components of the Obama Health Care Bill are beginning to be implemented. The State of California has passed legislation that enables it as well. These include:

- Pre-Existing Condition Insurance Plan (PCIP) is now open for enrollment in California. It will provide insurance for a high-risk pool of people who were unable to get insurance because of pre-existing conditions.
- A new health insurance exchange is being established in California. It will be an independent state agency which will provide consumers with information on various policies and will negotiate the best prices. Mid-year hikes can no longer occur in California.
- There must be a 60-day notice and transparency on rate hikes by insurance companies.
- Rescissions have been eliminated. This practice occurred when an insurance company terminated a policy because of high costs.
- Young adults up to age 26 can continue to be covered by their parents' health insurance.
- More preventive tests will be covered by Medicare and some new private insurance plans with no co-pay, deductibles, or coinsurance; these include wellness check-ups, immunizations, mammograms, pap smears, and cancer screenings including colorectal screening exams.
- Caps on the amount insurance companies will pay out over someone's lifetime are being phased out.
- Referrals to Ob/Gyn physicians and Pediatricians are no longer needed.
- Seniors in the "donut hole" of drug coverage are now getting rebate checks of \$250 to help pay for their prescriptions not covered by Medicare Part D.
- More Federal dollars are going to assist employers in paying higher healthcare bills for those just under 65 years of age.
- Small businesses can now get up to 35% of their health insurance premiums covered by the Federal government.



— Beryl Flom, V/P Membership

How'd Women Do in the Midterm Elections?



In resurrecting my op-ed piece about the November 2008 election results, I read where I saluted the rather meager increase in the number of women elected to serve in the U.S. Congress. At that time, I applauded the 58 Democrats and 17 Republican women who were elected to the U.S. House of Representatives (17.2%) and the one woman added to the U.S. Senate, for a total of 13 Democrats and four Republicans (17.0%). Another "year of the woman" could not be celebrated in 2008 as had been heralded in 1992.

One of the points in my 2008 article concerned the difficulty of identifying women willing to run for elected office, especially Republican women. Other points stressed the importance of encouraging political parties to recruit and support women candidates and to address the issue of incumbency. It seemed to me that once elected to Congress, these representative-elects could then plan on spending their golden years serving in our federal legislature.

The final post-election outcome reported from the 2008 election cycle was the appearance of a new role model for women considering elected office as a career: former Governor Sarah Palin. Her popularity suggested that having a stellar college record and a family modeled after "Father Knows Best" wasn't a prerequisite for jumping into the political arena. Being attractive and articulate seemed to weigh more heavily than one's resumé.

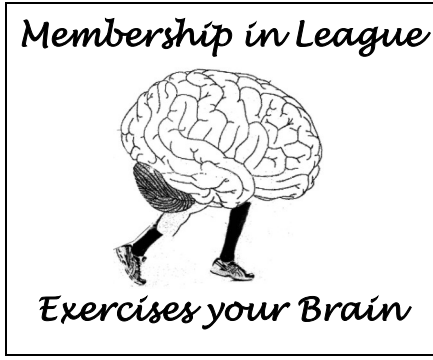
In apprising the 2010 election results, how can we evaluate the impact on women's election of the first two years of Obama's administration, a Democratic Congress, the continuing wars, the Tea Party's arrival on the political

(continued on the following page)

MEMBERSHIP

We welcome several new and reinstated members this month:

- Toni Atkins 92102
- Beverly Bennett 92020
- Benita Berkson 92116
- Christine Gommel 92104
- Steve Kollisch 92127
- Grace Niles 92106
- Mary Rogers 92102
- Susan Shmalo 92037
- Jeannette Smith 92117
- Walter Straley 92037
- Dana Woods 92107



Oceanographic Institute. Her work will be continued through the Kenneth and Harle Montgomery Foundation.

Lee Norton was an active member of the League for 49 years. She worked with the Membership Committee making calls to new members. She was a loyal supporter and generous donor to the League and was always willing to lend a hand. Lee attended the Mission Hills Unit which is now relocated to Mission Valley. Her knack was recording consensus meetings and making sure that every participant was heard during the discussion of consensus questions. Lee graduated from Vassar College in 1950 and worked at the Naval Personnel Research and Development office with Joe Silverman (Virginia's husband). She also died of cancer and has been inactive for the last few years. Our members remember Lee with a broad smile and a sweet voice that always made people feel welcome and special.

Many visitors have been coming to the Unit meetings to hear the pros and cons of the ballot measures. Please encourage them to continue coming to Units and to join our League.

We have also lost two important members this month: **Harle Montgomery** was not only a League supporter, but was very influential in the community and is a great loss to both La Jolla and San Diego. She lived a long and productive life but succumbed to cancer at age 92. Mrs. Montgomery was a lover of politics, the arts, social justice, and education and contributed generously to the San Diego downtown library, Salk Institute, Scripps Memorial Hospital, La Jolla Playhouse, and the Scripps

The Holiday Party is a great place to socialize with League members and their guests. The food is the best - there's nothing better than potluck and all the variety it brings from our terrific cooks! We encourage members to attend and make new friends.

— Beryl Flom, Vice President/Membership
858-459-4406 or edflom@sbcglobal.net

How'd Women Do in the Midterm Elections? (continued from preceding page)

scene, a new role model, and a sluggish economy? Although mail-in and provisional ballots are still being counted in four congressional races, the results for women in House races total 48 Democrats and 24 Republicans for a decrease to 16.6%. In the U.S. Senate, one more Republican woman has been elected (Kelly Ayotte from New Hampshire), and Democratic Senator Blanche Lincoln from Arkansas lost her bid for re-election -- for a total of 12 Democrats and five Republicans (17.0%), if Lisa Murkowski triumphs in the count of write-in ballots.



In California, all the incumbent women representatives and Senator Barbara Boxer were re-elected. The number in the California Congressional delegation of 53 totals 18 Democratic women and one Republican woman. However, the promise of a long congressional career for incumbents in other states failed to materialize, as evidenced by the loss for re-election of ten women Democratic incumbents in the House of Representatives. No Republican incumbent lost her seat. Such results suggest that the voting public rejected these Democratic women as a backlash against the political party in office and the supposed slowness of the Administration and Congress in improving the economy and creating jobs. We can only hope that these election results are only a slight setback in reaching our goal of 50/50 by 2020.

— Anne Hoiberg, Co-President

WHERE WE STAND ON CORPORATE MONEY AND ELECTIONS

Nearly a year ago, in January 2010, the Supreme Court of the United States handed down a 5-4 decision in favor of the plaintiff in the *Citizens United v. Federal Elections Commission* lawsuit. That decision changed a century of laws banning corporate money in elections.

The *Citizens United* argument centered around the First Amendment right to free speech. Five justices agreed that the ban on corporate and union giving violated the First Amendment. Four justices said the ruling would permit corporate money to inundate political campaigns and ruin democracy.

In February 2010, then-President of the League of Women Voters—U.S. Mary Wilson appeared before a committee of the House of Representatives to express the concern of the League regarding the Court decision. She warned, “It has given the green light for corporations, including foreign corporations, to intervene directly in elections -- from the local school board or zoning commission to Congress and President of the United States -- taking the power away from the voters. And it has set the stage for corruption to skyrocket out of control -- now that the Court has allowed unlimited corporate and union expenditures, the power of well-paid lobbyists linked with those interests will greatly increase.”

She informed the committee of hearing from citizens around the country their concerns as to what the effects of the decision would be on our elections and government. She urged a strong response from Congress and the Executive to the fundamental change brought by the Court decision.

The first of several steps that she advised be taken was disclosure. This would be a basic step in protecting the role of the voter. The League of Women Voters supports strong disclosure requirements for both those who receive election funds and

those who provide such funds.

In July 2010, after much opposition, the House passed the Disclosure Act with a voice vote. Passage of the bill again faced opposition and obstruction in the Senate. Again the League spoke out. In September 2010, the new president of the League of Women Voters—U.S., Elizabeth MacNamara, stated, “In the wake of *Citizens United*, the DISCLOSURE Act is essential. It requires CEOs to stand by their ads and exposes special interest groups behind last-minute attacks. It stops manipulation of elections by fly-by-night groups, and prevents U.S. corporations controlled by foreign -- or even hostile -- governments from pumping secret money into our elections.”

The 2010 midterm elections have come and gone. One political center reported that as of October 26, \$266 million was spent by business groups, unions, and interest groups including at least \$128 million by groups not required to disclose donors publicly.

Our Units in February will look at and discuss the possible ramifications of the Court decision, whether corporations should be treated as persons, the steps besides disclosure that the National League set forth to the committee, and some of the background that brought the debate to the Supreme Court. This will be in preparation for the February luncheon which will feature speakers talking about the Supreme Court decision in the case of *Citizens United v. Federal Elections Commission*.

The League committee preparing material on this issue welcomes other groups concerned about the issue to join us as sponsors of the luncheon.

— Mary Jean Word, Director, Voter Service



MEET YOUR BOARD MEMBERS

Beryl Flom — Membership Vice-President

The League of Women Voters has played a big part of Beryl Flom's life over the last forty years. When Beryl stopped working to raise children and moved to the suburbs of Chicago for better schools, she could no longer commute weekly into the city, so she brought her issue of disability awareness and accessibility to the League. Beside surveying the public buildings in town and typing up a booklet on their accessibility, she got the State League of Illinois to adopt a position on accessibility and created a course on awareness for third graders. Beryl served on the Boards of the Deerfield and Lake County LWV until she moved to San Diego and joined that Board. She has held most positions over time including president of all three Leagues. She has also been chair of Action, Program, and Membership as well as served on Development, Nominating, Budget, Bylaws, Natural Resources, Education, and Public Policy Committees in San Diego. Beryl treasures her League friends and wonderful discussions held at meetings and Units.

Due to falling membership and lack of issues in Deerfield, Beryl worked with the County Health Department to develop a large health fair for about 1,000 low income children. Leaguers raised \$20-30,000, collected backpacks and school supplies for them, lined up medical personnel to do immunizations and



health screenings including hearing and vision, and held a used book fair. The Kids First Health Fair continues to be held for one very busy day in August each year. Leaguers became so involved and interested in hands-on work that the traditional work of the League waned some.

In her BC (before children) years, Beryl graduated from Northfield-Mt. Hermon School in MA and Goucher College in Baltimore, worked at Sloan Kettering Hospital doing medical research, and taught high school biology and science in Wellington, NZ and Wellesley,

MA. She and Ed moved to Chicago as soon as they were married and have continued to travel and work with kids and teenagers through their church. They currently mentor a family in San Diego, and Beryl serves on the Mentoring Committee at First United Methodist Church. Family now plays a bigger role in Ed and Beryl's lives, so they continue to travel to spend time with family members all over the U.S. Their daughter lived in China for six years with her family, so there was a time when Beryl was gone from League responsibilities on yet another long trip. She loves to be active and involved and somehow keeps all the balls in the air, but she is learning to say no to some requests of her time.

Visit our website at <http://www.lwvsandiego.org> to join the League, donate, see current events, review current and past Voters, check out League positions, access links to related sites, and to contact LWVSD officers.

We look so much better in color! You can have your Voter delivered to you via e-mail, providing you a more colorful experience and saving money for LWVSD. If you'd like to change to the e-mail version, contact us at lwvsd@san.rr.com.





LEAGUE OF WOMEN VOTERS OF SAN DIEGO
 4901 MORENA BLVD.
 ADDRESS SERVICE REQUESTED

NON-PROFIT ORG.
 U.S. POSTAGE PAID
 San Diego, CA
 Permit No. 422

TIME-DATED MATERIAL ENCLOSED

Copyright © 2010 by The League of Women Voters of San Diego. No part of this newsletter may be used or reproduced in any manner whatsoever without written permission. For information, address San Diego Voter Editor, The League of Women Voters of San Diego, 4901 Morena Blvd., Bldg. 100,

LWVSD Diversity Policy

The LWVSD, in both its values and practices, affirms its belief and commitment to diversity and pluralism, which means there should be no barriers to participation in any activity of the League of Women Voters on the basis of gender, race, creed, age, sexual orientation, national origin, or disability. LWVSD recognizes that diverse perspectives are important and necessary for responsible and representative decision making. LWVSD subscribes to the belief that diversity and pluralism are fundamental to the values it upholds and that this inclusiveness enhances the organization's ability to respond more effectively to changing conditions and needs. LWVSD affirms its commitment to reflecting the diversity of Americans in its Board, staff , and programs.

PLEASE JOIN LEAGUE

Individual Membership \$65 Additional Household Memberships \$35 _____

I am unable to join at this time, but I am enclosing a tax-deductible* contribution of:

\$25 \$35 \$50 \$100 Other _____ Please contact me with more information

Name(s) _____ Address _____

City, State, Zip _____ Phone(s) _____ E-Mail _____ - _____

How did you hear about LWV? _____

Please make your check payable to: League of Women Voters of San Diego
 4901 Morena Blvd, Suite # 104 San Diego, CA 92117 Phone: (858) 483-8696

* To be tax-deductible, please make check to LWVSD Education Fund.