



## MAY UNIT MEETINGS: BALLOT ISSUES

The May Unit meetings will be held a little early this year – during the week of May 7. The topics will be the changes in the ballot, important changes, and the propositions that will be voted upon. It will be an interesting topic and discussion.

- State Proposition #28 will change how long a state legislator can serve in office.
- State Proposition #29 will add 5¢ to the cost of every cigarette or \$1 to the cost of a pack of cigarettes. This money will be used for research and prevention of tobacco-related diseases.
- City Proposition A will prohibit the San Diego from requiring union contracts on city construction projects.
- City Proposition B will revise the city retirement benefits.

See you there!

Bring your friends!

Margaret Stevenson

See pp. 4-7 for analyses of propositions

## Call to Annual Business Meeting - 2012



The League of Women Voters of San Diego invites all members to participate

Saturday, June 2, 2012, 9:30 a.m.-1 p.m.

Mission Valley Library

2123 Fenton Parkway, San Diego 92108

Brunch and Registration \$15



RESERVATIONS REQUIRED!

(no money taken at the door)

Reservation Deadline is June 1, 2012

*Join us to discuss next year's program and budget and to elect officers and directors. Bylaws for the merged League will be emailed and available at the Annual Meeting. Members wanting a hard copy prior to the meeting should contact the office with their information so that it can be mailed to you. Pages 9-13 contain information about the budget, nominating report, program report, reservation tear-off, and directions to Mission Valley Library.*

*Your participation and cooperation are essential.*

## *County Convention is for Everyone!*

### *Come to League of Women Voters of San Diego County Convention 2012*

Wednesday, May 16, 9:30 a.m.-1 p.m., Holiday Inn Bayside, 5th Floor Bayside Tower

Business Meeting: Budget, Program, Elections, Drawing of Winning Raffle Tickets

Honor Outstanding League Leaders: Liz Kruidenier and Anita Reith

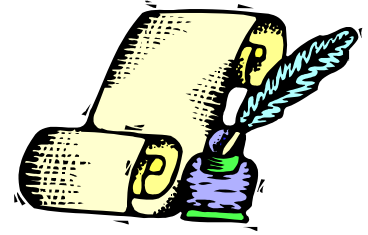
Press Award to East County Magazine, Miriam Raftery, Editor, for Coverage of the "Red Tape Reduction Issue"

Supervisor Pam Slater-Price Will Speak and Answer Questions



Details page 3

# PRESIDENT'S MESSAGE



The June 5th Primary is right around the corner and this is the League's time to truly fulfill its mission.

SmartVoter has sent out requests to candidates for their input on our site. I went on SmartVoter just before writing this and I see that few of them have taken advantage of this free outreach to voters so far. We may want to remind them of this service. This is a small, economical way for candidates to get their word out.

The State Propositions have the summary from the State Attorney General a click away for interested voters at [www.smartvoter.org](http://www.smartvoter.org).\* Our League has decided to give a neutral rating to both local Proposition A and B because we have not studied them and therefore can't oppose or support them.

Our Speakers Bureau and Candidate Forums are getting requests and fulfilling them. It can be interesting and fun to be involved in these services of the League, and it is wonderful to see the appreciation that people have for the League when we provide them.

League of Women Voters  
San Diego  
Board of Directors 7/11 - 6/12

**President.....Mary Jean Word**  
**President.....Jeanne Brown**  
**Treasurer.....Bev Wilson**  
**Secretary.....Nancy Witt**  
**VP/Administration.....Ruberta Castro**  
**VP/Membership.....Beryl Flom**  
**VP/Program.....Jeanne Brown**  
**VP/Program.....Adrienne Schere**  
**VP/Education.....Penny Adler**  
**Dir/Public Policy.....Joan Dahlin**  
**Dir/Voter Service.....Mary Jean Word**  
**Dir/Voter Service.....Amy Hjerstedt**  
 Dir/Natural Resources..Josann Feathers  
**Unit Coordinator.....Jody Tadder**  
**Chair, International Relations.....**  
**.....Committee.....Anne Hoiberg**  
**Voter Editor..... Dolores Nelson**  
 Administrative Asst.Genoveva Martinez  
 Office hours Tuesdays & Thursdays  
 7 a.m. - 2:30 p.m. Call ahead, please.  
 Phone/Fax: 858-483-8696  
 E-mail: [lwvsd@san.rr.com](mailto:lwvsd@san.rr.com)  
 Website: [www.lwvsandiego.org](http://www.lwvsandiego.org)  
 SmartVoter: [www.smartvoter.org](http://www.smartvoter.org)  
 San Diego Voter is published monthly  
 by the Board except June, July, and  
 December. Subscriptions: \$27 per year.  
 League of Women Voters of San Diego  
 4901 Morena Blvd., Bldg 100, Suite 104  
 San Diego, CA 92117

Our Units are learning about all of the changes that new laws have made for the June and November elections in order to explain them to our friends and neighbors. In May, the pros and cons of ballot measures will be presented and discussed at Units.

We are using Action to encourage the California State Assembly to pass the Disclose Act this spring and hopefully the Senate this summer. We are co-sponsors for the May 12 Campaign Kick-off for AB1648 (The California Disclose Act) at Azalea Park in City Heights. Look at the calendar on page 3 for details of this event.)

We have also been working with a new coalition called the Community Budget Alliance. Just as we found that once the people saw how important Redistricting was to their lives and so fought for a more transparent, equitable process, we believe that the same will be true for the **City's Budget Process. There are decisions being made now with the Strong Mayor form of government that have no input from the community nor even the City Council. This is a process that is ripe for corruption and we are working to change it. If it would interest you to become involved in improving the city's budget process, please contact me.** I would love to have help with this. As we merge with the East County League, I can see this growing throughout our county; this has the potential for being a huge force in bringing more citizen involvement in their government.

As always, our Board and committees are active and could always use more help. Please contact me or any of the current Board members or committee chairs if you want to become more involved.

Yours in League  
Jeanne Brown

\*See also p. 7.

# UNIT CALENDAR — MAY — PROS AND CONS OF BALLOT ISSUES

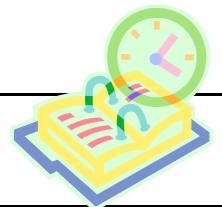
Monday, May 7 9:30-11:30 a.m.	Rancho Bernardo and Scripps Ranch	The Gateway – TV Room 12751 Gateway Park Rd. Poway, CA 92064 858-487-1197	<b>Claire Weiner.....858-679-7350</b> <b>Betsy Stevens.....858-451-5653</b>
Tuesday, May 8 9:30-11:30 a.m.	La Jolla	Riford Center 6811 La Jolla Boulevard La Jolla, CA 92037	<b>Joan Dahlin.....858-454-5019</b>
Tuesday, May 8 1-3 p.m.	University City	North University City Community Library 8820 Judicial Drive San Diego, CA 92122	<b>Catherine Stoll....858-755-4119</b>
Wednesday, May 9 1-3 p.m.	Tierrasanta	Tierrasanta Library 4985 La Cuenta Drive San Diego, CA 92124	<b>Carole Porter.....858-279-5474</b>
Wednesday, May 9 5:30-7:30 p.m.	Mission Valley	Meeting Room, Mission Valley Library Fenton Pkwy., Ikea side of shopping center San Diego, CA 92108	<b>Debra Blum.....619-225-0353</b>
Thursday, May 10 9:30-11:30 a.m.	East San Diego	College Rolando Library 6600 Montezuma Road San Diego, CA 92115	<b>Barbara Evje.....619-463-0673</b>
Saturday, May 12 10 a.m.-noon	Southeastern	Malcolm X Library, Multi-media Room 5138 Market Street San Diego, CA 92105	<b>Robin Loving.....619-947-9717</b> La Quita Robbins...619-470-9095

## LWVSD CALENDAR — MAY 2012

All regular meetings are held at the LWVSD office unless noted otherwise.

1st Tues	May 1	4 p.m.	LWVSD Board	2nd Fri	May 11	9:30 a.m.	Public Policy
1st Thurs*	May 3	9:30 a.m.	Unit Council	3rd Mon	May 14	10 a.m.	Membership
*Unit Council is 1st Thurs following Board meeting				3rd Wed	May 16	9:30 a.m.	Education
1st Fri	May 4	10:30 a.m.	LWVSDC ILO Board	4th Fri	May 25	10 a.m.	Program

## SPECIAL EVENTS — MAY-JUNE



Sat., May 12	Disclose Act Kickoff Rally at Azalea Park, 2596 Violet Street, San Diego 92105 from 12:30-2 p.m., see p. 8.
Wed., May 16	LWVSDC—League of Women Voters of San Diego County (ILO) Convention 2012 9:30 a.m.-1 p.m. <i>Holiday Inn San Diego-Bayside, 4875 N. Harbor Drive, San Diego, CA 92106, 5th Floor Bayside Tower</i> — See Your Friends & Enjoy Lunch — Register by May 8 — See your April/Spring County Voter — For more information: <a href="http://sdilo.ca.lwvnet.org/">http://sdilo.ca.lwvnet.org/</a> <a href="mailto:RoSeay@aol.com">RoSeay@aol.com</a> or 858-926-8800 (see front page)
Sat., May 19	LWVSD Rummage Sale, 12262 Avenida Consentido. San Diego CA 92128, see p. 5
Sat., May 19	Plaza de Panama Balboa Park Workshop, 8:30-11a.m., Mission Valley Library, see p. 8.
Sat., June 2	LWVSD Annual Meeting, see front page and pp. 9-13.



# PROS AND CONS OF BALLOT ISSUES



## City of San Diego Proposition A: Fair and Open Competition in Construction

**THE QUESTION:** Should the City of San Diego be prohibited from requiring contractors to use Project Labor Agreements for City construction projects, except where required by law, and should the Mayor be required to post online all construction contracts over \$25,000?

**THE SITUATION:** A Project Labor Agreement (PLA) is a pre-hire agreement arranged between building and construction trade unions and owners, construction managers and/or general contractors to govern labor relations and terms and conditions of employment on an entire construction project. PLAs guarantee that work rules and conditions on a construction project are standardized. This eliminates conflicting practices of individual contractors. Typically, a PLA also provides no-strike guarantees for the life of the project. Government agencies rarely use PLAs. The City of San Diego has never signed a Project Labor Agreement but has considered them. The City has funded contracts with companies using PLAs. Petco Park developers signed such an agreement with labor groups building Petco Park for them.

The City currently posts some contract details on its website.

**THE PROPOSAL:** The proposition would amend the San Diego Municipal Code to prohibit the City from requiring a Project Labor Agreement (PLA) on City construction projects, except where required by state or federal law as a contracting or procurement obligation, or as a condition of the receipt of state or federal funds. The proposition would affect projects that are paid for in whole or in part out of City funds.

The Mayor would be required to post online all City construction contracts valued at more than \$25,000 in a given fiscal year. The number of total bidders who competed for the contract will be reported. Confidential and legally privileged information will not be given.

The proposition can be amended or repealed by a majority of City voters, but cannot be amended or repealed by the City Council.

**FISCAL IMPACT:** It is uncertain whether the City would lose State assistance for City construction projects as a result of passage of this ballot measure. A legal interpretation would be required to determine whether the **City's receipt of State funds for construction projects will**

be affected by the ballot measure. This is due to the passage of State Senate Bill 922 which was signed by Gov. Brown in Oct. 2011. Senate Bill 922 prevents California Charter cities from prohibiting the consideration of using PLAs on government projects that receive State funding. In fiscal years 2010 and 2011 the City of San Diego was awarded State funding of approximately \$36 million and \$158 million respectively.

The requirement to post the text of all construction project contracts over \$25,000 in a given year is estimated to cost \$450,000 annually. There would be about \$500,000 in set-up costs for this requirement.

Whether the use of a PLA on a construction project would add to the cost of a project is a widely debated matter. Some studies indicate an increase in project costs, while others dispute the conclusions of these studies.

**A YES VOTE MEANS:** That the City could not require a Contractor to enter into a PLA as a condition of bidding, negotiating, awarding, or performing of a contract for City construction projects, unless an exception applies such as a requirement by state or federal law requiring contract or procurement obligations. Or if a PLA is required on a given project as a condition of receiving state or federal funds for that project. The proposition would not restrict contractors and labor organizations from voluntarily entering into PLAs.

**A NO VOTE MEANS:** The City is not prohibited from the use of Project Labor Agreements for City construction projects.

**SUPPORTERS SAY:** Bids *requiring a PLA favor* union companies and deter nonunion companies from competing for contracts.

Business groups say that fewer bids lead to higher cost to taxpayers.

**OPPONENTS SAY:** PLAs eliminate an advantage that nonunion companies might have by requiring that all contractors pay the same wages and benefits.

Labor groups say that preventing strikes saves money.

The Ordinance would prohibit the City Council from deciding whether it would benefit the taxpayers to use a Project Labor Agreement.



## PROS AND CONS OF BALLOT ISSUES



### City of San Diego Proposition B: Revision of Retirement Benefits

**THE QUESTION:** Should the City Charter of San Diego be amended to direct City negotiators to seek limits on a City employee's compensation used to calculate pension benefits; eliminate defined benefit pensions for all new City Officials and employees, except police officers, substituting a defined contribution 401(k)-type plan; require substantially equal pension contributions from the City and employees; and eliminate, if permissible, a vote of employees or retirees to change their benefits?

**THE SITUATION:** Between 1947 and 1982, the City of San Diego had two defined benefit pension plans: the City plan and Social Security, which included Medicare after 1965. The City and employees made equal contributions to both plans.

In 1978, Proposition 13 amended the California Constitution, limiting the increase in property taxes, and requiring a 2/3 vote to approve local taxes. While welcomed by taxpayers, it negatively impacted future local government revenues.

In 1982, presumably in response to Proposition 13, the City gained approval from the IRS and City employees to “disenroll” in Social Security by promising a better City defined benefit plan, a City 401(k) plan, and health benefits for employees and retirees. Within a decade, however, the City struggled to meet the Annual Required Contribution, while the pension fund was well funded, attributable to stock market gains.

The City Manager proposed two plans: MP1 in 1996 and MP2 in 2002, both of which were approved by the City Council and gave employees increased retirement benefits in exchange for postponing required pension payments. The City also used the pension fund to cover other City obligations, including health care.

The next years were difficult times for the City, beginning in 2004 with an investigation by the Securities and Exchange Commission (SEC) that concerned misstatements made to the SEC about the pension fund on proposed bond issues; resignation of the Mayor; and civil and criminal lawsuits against many elected and appointed City Officials and Pension Board members—many of whom resigned or were fired.

In 2005, newly elected Mayor Jerry Sanders worked with City employees to reduce future pension and health costs. By 2008, the City had resolved most issues with the SEC,

enacted three Charter amendments to improve oversight of the pension system, and required a public vote to increase benefits. The pension fund, however, still has a huge deficit from past decisions, and the City has been paying hundreds of millions of dollars a year to make up for these practices. Recently, the Mayor announced a small surplus in the City General Fund of \$119 million over the next five years, a relatively small but significant change.

**THE PROPOSAL:** If approved, the City Charter will be amended to direct City negotiators to: 1) seek limits on a **City employee's compensation used to calculate pension** benefits; 2) eliminate defined benefit pensions for all new City Officials and employees, except police officers, substituting a defined contribution 401(k)-type plan; 3) require substantially equal pension contributions from the City and employees; and 4) eliminate, if permissible, a vote of employees or retirees to change their benefits.

All new City employees will be covered by this plan, except for police officers, who may choose between the defined contribution plan or the existing defined benefit plan (with benefits slightly reduced). The City will provide matching **funds for new employees' contributions of up to 11%, but** will not be responsible for the outcome. Death and disability benefits are included, but no health benefits.

In addition, the pensionable pay of all current employees will be frozen for six years, until 2018. Employees may continue to receive pay increases (COLA, merit, or other increases), but these will not be counted toward pensionable pay during the period.

The proposal also eliminates the right of both current employees and retirees to vote to change their benefits.

**FISCAL ANALYSIS:** The fiscal impact of the proposition is in dispute. Proponents of the new pension plan claim there will be approximately \$950 million dollars in savings over the next 30 years. However, the analysis by the City Independent Budget Analyst (IBA) concludes that the proposition will actually cost more than it saves over the first 30 years, resulting in a net deficit of \$13 million. This deficit is primarily attributable to startup costs for the new 401(k) program, plus death and disability benefits. Other findings show that any real savings will come from the six-year freeze on pensionable pay for current employees, the new plan for police officers, and the closure of the defined benefit plan for new employees.

*(continued on following page)*



(continued from previous page)

**A YES VOTE MEANS:** Support for the City Charter amendment to change the type of retirement benefits for new City employees.

**A NO VOTE MEANS:** Opposition to the initiative and support for the existing pension plan.

**THOSE IN FAVOR OF THE PROPOSITION SAY:** This initiative will begin to control the runaway pension costs that the current plan has created, which are unsustainable. Savings accrued will help pay to keep libraries and parks open, repair streets, and perform other needed improvements. The initiative is necessary, because City and Pension Board Officials failed to follow best practices by postponing required payments to the future, while increasing pension benefits. In addition, these same officials lied on financial statements submitted to the SEC about the status of the pension fund. Given the past behavior of City and Pension Board Officials, the Charter amendment is necessary to prevent the same behavior from happening again.

**The initiative petition is a true citizens' initiative.**

**THOSE OPPOSED TO THE PROPOSITION SAY:**

The ballot proposition was initiated by the Mayor and

Councilmen Kevin Faulkner and Carl DeMaio, who used their influence to raise funds to pay signature gatherers. **It is not a true citizens' initiative.**

The proposition violates state labor laws governing public employee safeguards, which require the Mayor to meet and confer with unions before taking action on a change in benefits. Moreover, the proposition unilaterally takes away the currently vested rights of City employees and retirees to vote on changes to their benefits, causing great potential harm. Defined contribution plans place all the risk on the employee, and there is no Social Security to act as a safety net. By law, all private sector employees with 401(k) plans are also enrolled in Social Security. If this initiative is passed, there definitely will be litigation.

Police officers will be the only new employees exempt from the new mandate, because of favoritism by the Mayor, the former Chief of the San Diego Police Department.

**According to the IBA, the City's Unfunded Actuarial Liability will increase.**

There will be an increased turnover of new employees, leaving the city for better pay and benefits after receiving training from and experience with the City.

---

## MEMBERSHIP

### Membership In League



### Exercises Your Brain

At the Annual Meeting, we will be honoring Marilyn Klein and Bev Wilson as incoming 50-year members which brings us to about twenty people who no longer pay dues and have served the League for most of their adult lives. We will also be welcoming into our fold about 35 members from the East County LWV who is expected to merge with LWVSD on June 2nd.

There are two new members this month: Shirley King from 92014 and Martha Wild from 92104. Please welcome them at your Unit meeting or a general meeting.

Dues renewal letters will go out the end of June. It would be very helpful if you could respond promptly; otherwise we spend volunteer time and postage to keep reminding about one-third of our membership who do not renew during the month of July.

Have a fun summer and don't forget to come to the Annual Meeting where we will start planning for next year!

— Beryl Flom, Vice President/Membership, 858-459-4406, edflom@sbcglobal.net

Donna Jean Meyer was honored last year as a 50-year member and has now passed away at Fredericka Manor. Donna Jean joined the League in San Antonio and then moved to Point Loma. She taught fifth grade at Kate Sessions School and then trained as a nurse. Donna Jean served as a Unit Leader in Point Loma and worked on government issues in the League. Her husband, John, is also very supportive of the League.

# LWVSD Rummage Sale - Save Your Stuff!!

Saturday, May 19  
12262 Avenida Consentido  
San Diego CA 92128  
(directions below)



- Donations will be accepted at:
- ◆ 4901 Morena Blvd. (League office) call ahead
  - ◆ 12262 Avenida Consentido  
**(Bev's home and site of sale)**
    - ◆ Unit meetings

PLEASE SIGN UP FOR THE COMMITTEE AND/OR BE A WORKER

Friday, May 18, and/or Saturday, May 19

Benefits, of course, to LWVSD without asking our members for a donation — EXCEPT for time and stuff. Help is needed to sort, price, and sell. Membership in this EXCLUSIVE committee will include lots of laughs and lunch on Friday, May 18, while pricing our merchandise.



Bev Wilson  
bjwilson@san.rr.com  
858-592-9664

- ⇒ I-15 N — Take exit 23 for Bernardo Center Dr 0.3 mi
- ⇒ Turn right onto Bernardo Center Dr 0.2 mi
- ⇒ Turn right onto Bernardo Heights Pkwy 0.1 mi
- ⇒ Take the 1st left onto Paseo Lucido 0.2 mi
- ⇒ Take the 3rd left onto Avenida Consentido — house is on left

## Vote With the League - June Election State Ballot Measures

League of Women Voters of California supports Proposition 28, the Legislative Term Limits Reform Act. This simple reform will help make our legislature more accountable and effective. The current limits on how many terms an individual can serve in the legislature would be replaced by a twelve-year limit on the total number of years one could serve—whether in the Assembly, the Senate, or a combination of the two.



LWVCalif has taken a neutral position on Proposition 29, the California Cancer Research Act. This measure would add a one-dollar per pack tax on cigarettes sold in California, with proceeds to be used for cancer and other smoking-related health issues, anti-smoking campaigns, and law enforcement. While the League supports the causes underwritten by this measure, we believe that earmarking state revenue for specific expenses reduces the flexibility needed by the legislature in setting budgets to respond to current needs.



The Easy Voter Guide is available online for the June 5, 2012 Primary Election! Available in English, Chinese, Spanish, Vietnamese, and Korean, this nonpartisan guide makes a handy educational tool for new and busy voters.

MAY 21, 2012

Deadline to register to vote in this election.

MAY 29, 2012

Last day for your county elections office to **receive your written request for a "vote by mail" ballot.**

JUNE 5, 2012 — ELECTION DAY

Your polling place is open from  
7 a.m. to 8 p.m.

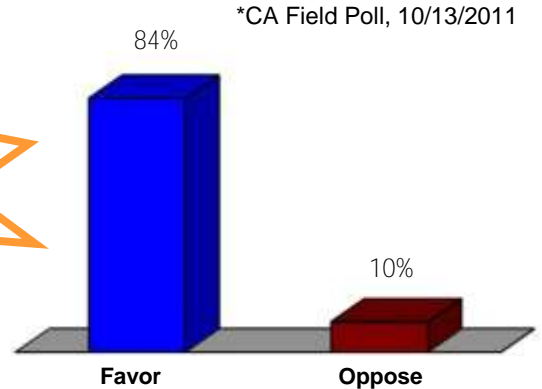
## Disclose Political Funders with AB 1648, *the new California DISCLOSE Act*

### Example Disclosure Required by AB 1648

84% of Californians favor clearly identifying major funders\*



Join LWVSD for a  
Kickoff Rally May 12.  
See calendar p. 3.



**The Problem:** Our democracy is under attack by anonymous and misleading political ads.

**The Solution:** Expose the real funders of political ads with AB 1648, the *California DISCLOSE Act*.

- Require all political television ads, radio ads, print ads, and websites to clearly list their top three funders, including their logos.

**Imagine how much of a difference it would make if hidden special interests couldn't fool people into voting against their own interests...**

**Help LWV pass AB 1648 so voters know who is really funding political ads!**

California Clean Money Campaign 3916 S. Sepulveda, Suite 109 Culver City, CA 90230

(310) 397-0200 [www.YesFairElections.org](http://www.YesFairElections.org) [info@CAClean.org](mailto:info@CAClean.org)

[http://www.caclean.org/content/pdf/ccmc\\_ab1648\\_halfpager.pdf](http://www.caclean.org/content/pdf/ccmc_ab1648_halfpager.pdf)



## PLAZA DE PANAMA BALBOA PARK WORKSHOP

Saturday, May 19, 2012, 8:30-11 a.m., Mission Valley Library

A free two-hour Workshop will be held to explore the history of Balboa Park's Central Mesa planning and review key details of the Plaza de Panama Project plus selected Alternatives (of 13 studied in the Draft EIR) to the main Project proposal. The purpose of the Workshop is education only - no position on the Project or Project Alternatives will be taken at the Workshop.

### Speakers include:

Vickie Estrada, Estrada Land Planning (1989 Balboa Park Master Plan; 1992 Central Mesa Precise Plan)

Mark Johnson, FASLA, CIVITAS (Plaza de Panama Project)

Jay Shumaker, AIA, Shumaker Architecture and Planning (Half-Plaza Alternative)

Bruce Coons, Executive Director SOHO (Modified Central Mesa Precise Plan)

John Ziebarth, AIA, John Ziebarth Associates (Gold Gulch Parking Structure Alternative)

Sponsoring organizations: Citizens Coordinate for Century Three (C3); League of Women Voters of San Diego; New School of Architecture and Design; San Diego Architectural Foundation; San Diego Chapter, American Society of Landscape Architects; San Diego Council of Design Professionals; San Diego Section, American Planning Association; Society for Marketing Professional Services



# PROPOSED ORDER OF BUSINESS ANNUAL MEETING 2012

09:45 REGISTRATION and BRUNCH

10:15 **WELCOME**.....Co-President Jeanne Brown

10:20 LWV EAST COUNTY LEAGUE BUSINESS AND VOTE (moves to a seminar room)

10:30 **LWVSD CALL TO ORDER, CREDENTIALS REPORT**.....Co-President Mary Jean Word

- Appointment of committee to approve 2012 minutes
- Adoption of Order of Business and Convention Rules
- Introduction of Parliamentarian, Pages, Timer, and Secretary
- Appointment of Committee to approve 2012 Minutes



MINUTES OF THE 2011 ANNUAL MEETING.....Nancy Witt, Secretary

INTRODUCTION OF THE 50-YEAR MEMBERS.....Beryl Flom, Membership Chair

**TREASURER'S REPORT**.....Bev Wilson, Treasurer

VOTE TO MERGE LWV East County with LWV San Diego

11:15 **"GETTING TO KNOW YOU"** activity — East County and San Diego members meet together again

11:45 **PROPOSED 2012-2013 PROGRAM**.....Jeanne Brown, Program Chair

- Motion to consider items recommended by the board (does not require a second)
- Presentation, motion to adopt, discussion, vote (simple majority)
- Motion to consider non-recommended items
- Presentation, motion to adopt, discussion, vote ( 3/5 majority)

12:00 **PROPOSED BYLAWS CHANGE**.....Alice McCauley, Bylaws Committee Member

Presentation, motion to adopt, discussion, vote

12:15 **PROPOSED 2012-2013 BUDGET**.....Kathleen MacLeod, Chair

Presentation, motion to adopt, discussion, vote

12:30 **2012-2013 OFFICERS and DIRECTORS**.....Shirley Larson, Nominating Committee Chair

- Nominating Committee Report
- Nominations from the floor
- Election of Officers and Directors
- Introduction of continuing Officers and Directors



12:45 **PRESIDENTS REPORT to the membership**.....Co-Presidents Donna Bartlett-May / Jeanne Brown

RESOLUTIONS and DIRECTIVES to the new Board (Resolutions require a vote. Directives do not.)

ANNOUNCEMENTS and ACKNOWLEDGEMENTS

## PROPOSED BOARD OF DIRECTORS OF LWVSD 2012-14

OFFICERS	Name	Telephone	E-mail
Co-President 2014	Donna Bartlett-May 10760 Eureka Road Spring Valley, CA 91978	619-660-8290 home 619-667-6232 work	<a href="mailto:dbartlettmay@aol.com">dbartlettmay@aol.com</a> <a href="mailto:donna.bartlettmay@helixwater.org">donna.bartlettmay@helixwater.org</a>
Co-President/1 <sup>st</sup> VP 2013	Jeanne Brown 4374 Santa Cruz Avenue San Diego, CA 92107	619-224-1807 home 619-857-1807 cell	<a href="mailto:jhisten@cox.net">jhisten@cox.net</a>
Secretary 2014	Nancy Witt 1168 Devonshire Drive San Diego CA 92107	619-222-7230	<a href="mailto:nancystew@copper.net">nancystew@copper.net</a>
Treasurer			
VP/Administration 2014	Beryl Flom 1577 Vista Claridad La Jolla, CA 92037	858-459-4406	<a href="mailto:edflom@sbcglobal.net">edflom@sbcglobal.net</a>
VP/Membership			
VP/Program 2014	Adrienne Schere <b>1001 Genter Street Suit 7<sup>a</sup></b> La Jolla CA 92037	858-729-0909	<a href="mailto:aschere@aol.com">aschere@aol.com</a>
DIRECTORS			
Public Policy 2013	Joan Dahlin 6960 Via Estrada La Jolla CA 92037	858-454-5019	<a href="mailto:joandahlin@yahoo.com">joandahlin@yahoo.com</a>
Voter Service 2013	Joan Eisenhower	619-997-0608	<a href="mailto:joanyz@yahoo.com">joanyz@yahoo.com</a>
Education 2013	Penny Adler 5359 Pendleton Street San Diego CA 92109	858-272-3509	<a href="mailto:dadler@ucsd.edu">dadler@ucsd.edu</a>
Unit Coordinator 2013			
VOTER Editor 2014	Dolores Nelson 1385 Don Carlos Ct Chula Vista CA 91910	619-421-9094 home 801-390-7694 cell	<a href="mailto:prncpl@cox.net">prncpl@cox.net</a>
International Relations 2013	Anne Hoiberg 3032 Voltaire Street San Diego CA 92106	619-223-8074 home 858-245-1677 cell	<a href="mailto:ahoiberg@sbcglobal.com">ahoiberg@sbcglobal.com</a>

## PROPOSED BOARD OF DIRECTORS OF LWVSD 2012-14 (continued)

DIRECTORS	Name	Telephone	E-mail
Nominating Committee Chair – elected 2013	Jody Tadder 3276 Old Kettle Road San Diego, CA 92111	858-277-4576	<a href="mailto:jotall3@yahoo.com">jotall3@yahoo.com</a>
Nominating Committee Member – elected 2013	Ethel Slayen 5123 Abuela Drive San Diego, CA 92124	858-278-2952	
Nominating Committee Member – elected 2013	Marietta Lassaline 1355 Finch Street El Cajon, CA 92020		<a href="mailto:dmlml@sbcglobal.net">dmlml@sbcglobal.net</a>
Nominating Committee Board Member – appointed			
Nominating Committee Board Member – appointed			
<b>DIRECTORS Off Board - appointed</b>			
Dues Secretary	Mariette Kobrak 3427 Tony Drive San Diego CA 92122	858-450-1521	<a href="mailto:mkobrak@san.rr.com">mkobrak@san.rr.com</a>
Reproductive Choice, Health Care	Sylvia Hampton 11063 Mulgrave Rd San Diego, CA 92131	858-578-8852 home 858-208-6572 cell	<a href="mailto:sylviahampton@gmail.com">sylviahampton@gmail.com</a>
Natural Resources	Josan Feathers 4025 Corte Tierra Alta La Mesa, CA 91941	619-660-2915	<a href="mailto:josan.dem@cox.net">josan.dem@cox.net</a>
Web Master	Cris Hagaman 6387 Lakewood Street San Diego CA92122	858-552-1343	<a href="mailto:wchagaman@san.rr.com">wchagaman@san.rr.com</a>

The footnotes below refer to budget notations on the following page.

<sup>1</sup> In memory of Pilot and Myself; East County's \$14,000 Selby Fund to be budgeted later				
<sup>2</sup> Includes Winter Holiday Party				
<sup>3</sup> Includes HOA Services				
<sup>4</sup> Board expenses include retreat, publications, annual meeting				
<sup>5</sup> Breakdown of budgeted \$16,000 combined wages/taxes based on P&L statement of Feb 2012.				
<sup>6</sup> From Chase for opening an account				
<sup>7</sup> Includes franchise tax				
<sup>8</sup> Includes unbudgeted computer, software and copying expenses				

## LWVSD BUDGET PROPOSAL FOR THE FISCAL YEAR 2012/2013

LWVSD PROPOSED FISCAL YEAR 2012-2013 BUDGET							
July 1, 2012 - June 30, 2013							
	FY 11-12	FY 11-12	FY12-13		FY 11-12	FY 11-12	FY 12-13
	Budget	Est Yr End	Proposed		Budget	Est Yr End	Proposed
<b>MEMBERSHIP</b>	<b>\$ 24,500</b>	<b>\$ 24,534</b>	<b>\$ 25,875</b>	<b>MEMBERSHIP</b>	<b>\$ 17,118</b>	<b>\$ 16,887</b>	<b>\$ 18,176</b>
Dues income	\$ 19,500	\$ 19,000	\$ 20,875	PMP-LWVUS	\$ 9,120	\$ 9,120	\$ 9,585
Transfers from Ed Fund	5,000	5,534	5,000	PMP-LWVC	6,688	6,688	7,392
				PMP-ILO	760	760	799
				Committee Expenses	300	145	150
				Yearbook	200	174	200
				Units Expenses	50	0	50
<b>DEVELOPMENT</b>	<b>\$ 23,500</b>	<b>\$ 20,620</b>	<b>\$ 18,500</b>	<b>DEVELOPMENT</b>	<b>\$ 1,900</b>	<b>\$ 795</b>	<b>\$ 850</b>
Donations: Members/Non-Mem	4,500	6,544	4,500				
Direct mail drive	6,000	4,188	4,000	Direct mail drive	550	345	350
Gifts from Estates <sup>1</sup>	5,000	5,100	5,000				
Thelma Selby Fund (\$14,000)	0	0	0				
Events/Other Projects <sup>2</sup>	8,000	4,788	5,000	Events/Other Projects <sup>2</sup>	1,350	450	500
<b>PROGRAM</b>	<b>\$ 9,500</b>	<b>\$ 3,000</b>	<b>\$ 3,500</b>	<b>PROGRAM</b>	<b>\$ 8,165</b>	<b>\$ 3,665</b>	<b>\$ 3,665</b>
General Meetings/Tours	9,500	3,000	3,500	General Meetings/Tours	8,000	3,500	3,500
				Earth Day	165	165	165
<b>ACTION</b>	<b>\$ -</b>	<b>\$ -</b>	<b>\$ -</b>	<b>ACTION</b>	<b>\$ 525</b>	<b>\$ 50</b>	<b>\$ 125</b>
				Advocacy	25	0	25
				Local Position Books	500	50	100
<b>VOTER SERVICE</b>	<b>\$ 1,300</b>	<b>\$ 375</b>	<b>\$ 750</b>	<b>VOTER SERVICE</b>	<b>\$ 200</b>	<b>\$ 214</b>	<b>\$ 300</b>
Election Services <sup>3</sup>	1,300	375	750	Election services	200	214	300
<b>NEWSLETTER</b>	<b>\$ 200</b>	<b>\$ 81</b>	<b>\$ -</b>	<b>NEWSLETTER</b>	<b>\$ 2,000</b>	<b>\$ 1,975</b>	<b>\$ 2,000</b>
Newsletter- Voter ads	200	81	0	Voter Printing/Postage	2,000	1,975	2,000
<b>BOARD OF DIRECTORS</b>	<b>\$ 500</b>	<b>\$ 500</b>	<b>\$ 500</b>	<b>BOARD OF DIRECTORS</b>	<b>\$ 3,000</b>	<b>\$ 1,745</b>	<b>\$ 1,545</b>
Annual Meeting	500	500	500	Board Expenses <sup>4</sup>	500	545	545
				Delegates Expenses	2,500	1,200	1,000
<b>PERSONNEL</b>	<b>\$ -</b>	<b>\$ -</b>	<b>\$ -</b>	<b>PERSONNEL</b>	<b>\$ 16,450</b>	<b>\$ 15,354</b>	<b>\$ 10,000</b>
				Wages <sup>5</sup>	13,902	12,978	
				Employer Taxes	2,098	1,841	
				Quickbooks Payroll Service	250	435	
				Insurance: Workers Comp.	200	100	
	FY 11-12	FY 11-12	FY12-13		FY 11-12	FY 11-12	FY 12-13
	Budget	Est Yr End	Proposed		Budget	Est Yr End	Proposed
<b>ADMINISTRATION</b>	<b>\$ 3,980</b>	<b>\$ 3,780</b>	<b>\$ 4,401</b>	<b>ADMINISTRATION</b>	<b>\$ 16,960</b>	<b>\$ 15,972</b>	<b>\$ 16,865</b>
Bank Rebates <sup>6</sup>		400	0	Bank charges	500	122	0
ILO Rental income	2,880	2,880	0	Bulk Mail Permit	185	190	190
Interest Income	1,100	500	500	Postage	100	237	200
Savings Withdrawal	0		3,901	Permits, Licenses, Taxes <sup>7</sup>	35	35	35
				Internet/Web	700	945	950
				Office Supplies <sup>8</sup>	1,900	1,502	1,500
				Rent & Utilities	10,300	10,381	11,300
				Insurance: Liability	1,540	1,540	1,540
				Repairs & Maintenance	500	0	500
				Telephone, incl voice mail	1,200	1,020	650
<b>TOTAL INCOME</b>	<b>\$ 63,480</b>	<b>\$ 52,890</b>	<b>\$ 53,526</b>	<b>TOTAL EXPENSE</b>	<b>\$ 66,318</b>	<b>\$ 56,657</b>	<b>\$ 53,526</b>
<b>PROJECTED</b>							
<b>NET INCOME/(LOSS)</b>					<b>\$ (2,838)</b>	<b>\$ (3,767)</b>	<b>\$ -</b>

Footnotes are on the previous page

# PROPOSED PROGRAM — 2012-2013

## Board Recommendations (simple majority vote)

- Retain all our LWVSD positions.
- No new study.

## Issues for Emphasis

- FDA (Food and Drug Administration)
- Campaign Finance Reform

## Non-recommended Program (three-fifths vote)

- TOT tax use in our city.
- Compare and assess recent laws regarding Voter ID requirements..



— Jeanne Brown, Program Co-Chair

## Directions to Mission Valley Library

From the south: take Highway 163 to Friars Road East. Turn right at Fenton Parkway; turn left at the first traffic light and turn right immediately. The library will be ahead at the end of this area. The library requests that we park outside of their parking area to allow their limited parking for those making short visits to the library.

From the north: take I-15 south to Friars Road West and turn left on Fenton Parkway. Then follow the directions above.

By Trolley: Use the green or blue line and exit Fenton Parkway station.

## League of Women Voters of San Diego Annual Meeting June 2, 2012

Registration deadline is June 1, 2012

Brunch and Registration \$15.00

Name(s) (print for nametag):

Member \_\_\_\_\_ Phone \_\_\_\_\_

Member \_\_\_\_\_ Phone \_\_\_\_\_

Guest(s) \_\_\_\_\_

Enclosed is \$ \_\_\_\_\_ for \_\_\_\_\_ Brunch and Registration Donation \$ \_\_\_\_\_

Make check payable to LWVSD and send to

League of Women Voters San Diego, 4901 Morena Blvd. Ste. 104, San Diego, CA 92117

Or register online at [www.lwvsandiego.org](http://www.lwvsandiego.org) Click on 'donate' and state 'Annual Meeting' as the purpose.





LEAGUE OF WOMEN VOTERS OF SAN DIEGO

4901 Morena Boulevard  
Bldg. 100, Suite 104  
San Diego CA 92117

Office hours Tuesdays & Thursdays  
7 a.m. - 2:30 p.m. Call ahead, please.  
Phone/Fax: 858-483-8696

NON-PROFIT ORG.  
U.S. POSTAGE PAID  
San Diego, CA  
Permit No. 422

TIME-DATED MATERIAL ENCLOSED

This is the final Voter for this year. We expect to have a summer issue in late July or early August and resume our regular schedule for Unit Meetings and Voters in September. In the meantime, please check our website for news.

Copyright © 2012 by The League of Women Voters of San Diego. No part of this newsletter may be used or reproduced in any manner whatsoever without written permission. For information, use address above.

LWVSD Diversity Policy

The LWVSD, in both its values and practices, affirms its belief and commitment to diversity and pluralism, which means there should be no barriers to participation in any activity of the League of Women Voters on the basis of gender, race, creed, age, sexual orientation, national origin, or disability. LWVSD recognizes that diverse perspectives are important and necessary for responsible and representative decision making. LWVSD subscribes to the belief that **diversity and pluralism are fundamental to the values it upholds and that this inclusiveness enhances the organization's ability** to respond more effectively to changing conditions and needs. LWVSD affirms its commitment to reflecting the diversity of Americans in its Board, staff, and programs.

JOIN THE LEAGUE

\_\_\_ Individual Membership \$50 (for rest of year) \_\_\_ Additional Household Memberships \$35 \_\_\_

\_\_\_ I am unable to join at this time, but I am enclosing a tax-deductible\* contribution of:

\$25 \_\_\_ \$50 \_\_\_ \$100 \_\_\_ \$150 \_\_\_ Other \_\_\_\_\_ \_\_\_ Please contact me with more information

Name(s) \_\_\_\_\_ Address \_\_\_\_\_

City, State, Zip \_\_\_\_\_ Phone(s) \_\_\_\_\_ E-Mail \_\_\_\_\_

How did you hear about LWV? \_\_\_\_\_

Please make your check payable to: League of Women Voters of San Diego  
4901 Morena Blvd, Suite 104 San Diego, CA 92117 Phone: 858-483-8696

\* To be tax-deductible, please make check to LWVSD Education Fund.